



**DocRetriever enables granular SharePoint restoration from existing SharePoint backups in minutes and without having to deploy a SharePoint recovery farm.**

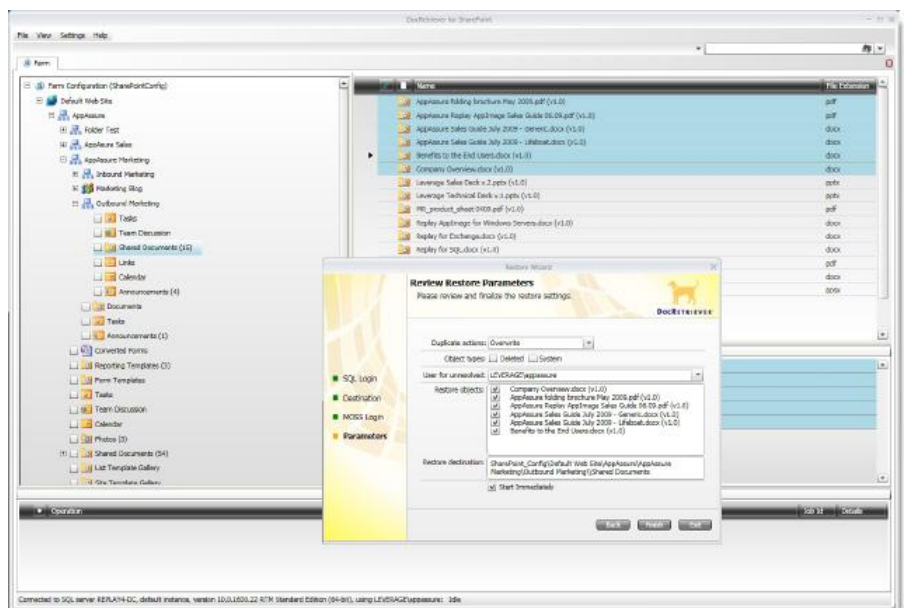
SharePoint Administrators no longer need to spend countless hours rebuilding your entire production database, or worry about deploying a temporary SharePoint recovery farm, just to recover an individual document or list item.

With DocRetriever, you can chose to recover from the backups you already have, or use the snapshots from AppAssure's enterprise-class backup and disaster recovery solution, Replay for SQL for continuous data protection and the ability to recover any component of your SharePoint environment from an individual object to a full bare-metal restore.

- Retrieve files in the content databases and restore them to a folder anywhere on your disk, even if SharePoint is offline or inaccessible. With DocRetriever, you can respond to Share-Point recovery requests in minutes, no matter what the system state.
- Restore SharePoint objects directly from a backup and avoid using a SharePoint recovery farm or rebuilding your entire production database. DocRetriever provides a convenient way to search, locate and preview any object within a SharePoint farm from across multiple database backups before restoring it.
- No need to upgrade your whole backup system to get fast recovery for SharePoint. DocRetriever lets you connect directly to your existing SharePoint backup files, and navigate them as though they were live SharePoint sites.

## Supported Sources

- *SharePoint / WSS V3 backups, STSADM or SQL*
- *Replay 4 Snapshots*
- *SAN Snapshots*
- *Microsoft DPM Backups*
- *SQL Server 2005, and 2008 SharePoint databases*



## Simplify SharePoint Recovery with DocRetriever

AppAssure's DocRetriever for SharePoint is an enterprise-class recovery tool enabling granular recovery of SharePoint objects such as sites, site hierarchies, list items, workflows, workspaces, libraries and views for SharePoint.

### Features & Benefits

- Installs in minutes
- Easy to use SharePoint browser to browse all documents and objects within a farm, site and site hierarchies directly from a backup.
- Restores documents, item lists, libraries with permissions intact without the need for a separate recovery server.
- Restores multiple versions of same document.
- Restores sites and sub-sites with permissions intact.
- Restores documents and items directly to original production environment, a file system or alternate locations within a live SharePoint server.
- Overwrites or skips existing items on a restore synchronizing the original with the backup by only restoring missing items.
- Enables full content searches so you can find any object in seconds.
- Connects directly to native SQL back-up files, so you can restore directly from SharePoint SQL Server back-up files.
- Audits and logs all operations for easy access to what objects have been added or modified.
- Performs all restore operations through the supported SharePoint APIs for compliance.

### DocRetriever for SharePoint Requirements

- Operating System:** Windows XP, Windows Vista, Windows 7, Windows Server 2003, Windows Server 2008, Windows Server 2008 R2
- SharePoint:** Microsoft Office SharePoint Server 2007 or Windows SharePoint Services v.3
- Other Software:** NET 3.5 and access to a local instance of SQL Server or SQL Express.
- Memory:** Minimum 512 MB. 2GB RAM Recommended

---

*For more information or to download your free trial, visit us online: [www.AppAssure.com](http://www.AppAssure.com).*