

Table of Contents

How to use new RRA..... 2

Step one - "Welcome" 2

Step two - "Hardwares" 2

Step three - "Installed OS" 3

Step four - "OS Identification" 4

Step five - "Confirm conversion" 5

 Install driver from supplied drivers list..... 6

 Install driver from inf file 7

Log files 8

New RRA test/usage guide

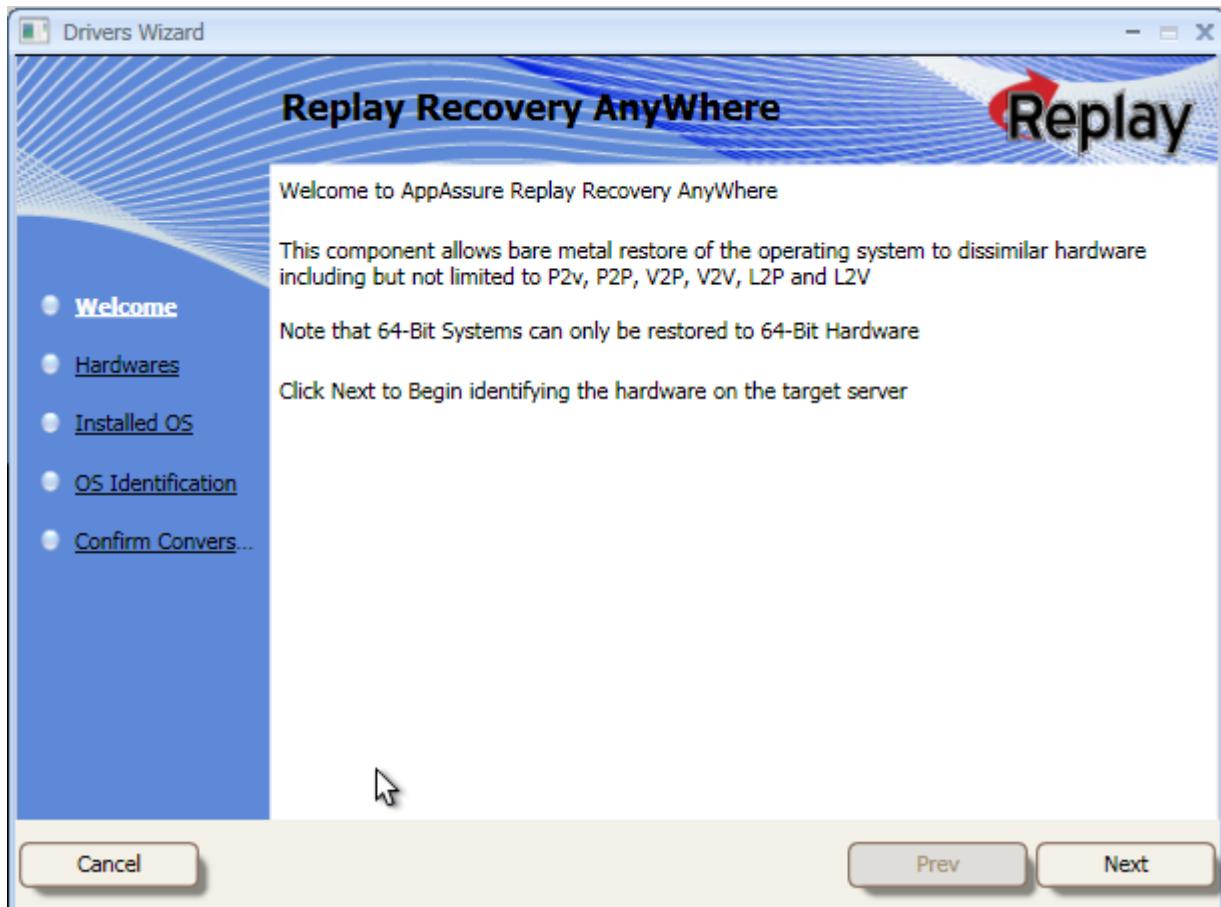
In order to simplify the driver installation process the new RRA is designed as a wizard.

There are 5 steps (5 wizard screens):

- "Replay Recovery Anywhere"
- "Hardware Identification"
- "Installed Operating Systems"
- "OS Identification"
- "Confirm conversion"

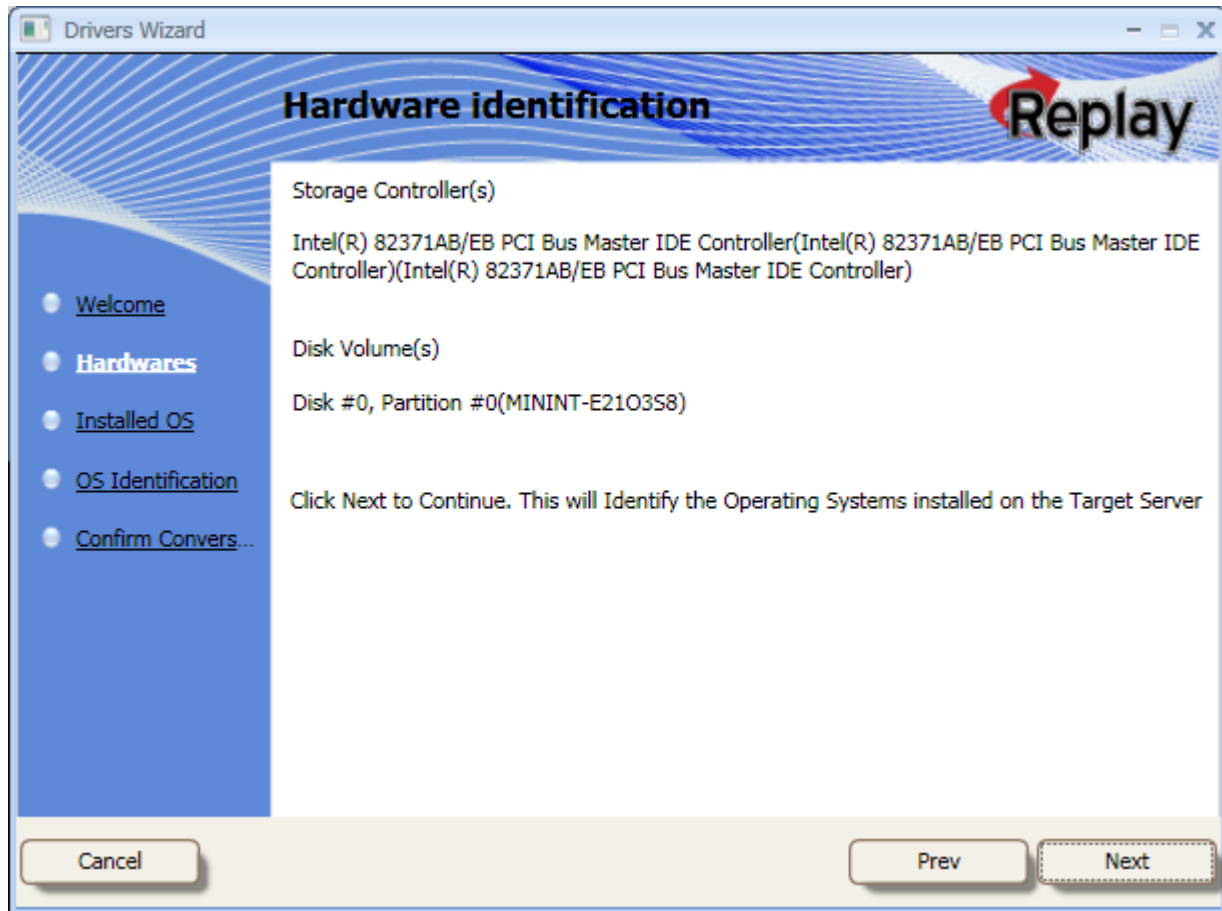
Step one - "Replay Recovery Anywhere"

This step describes the overall RRA functionality



Step two - "Hardware Identification"

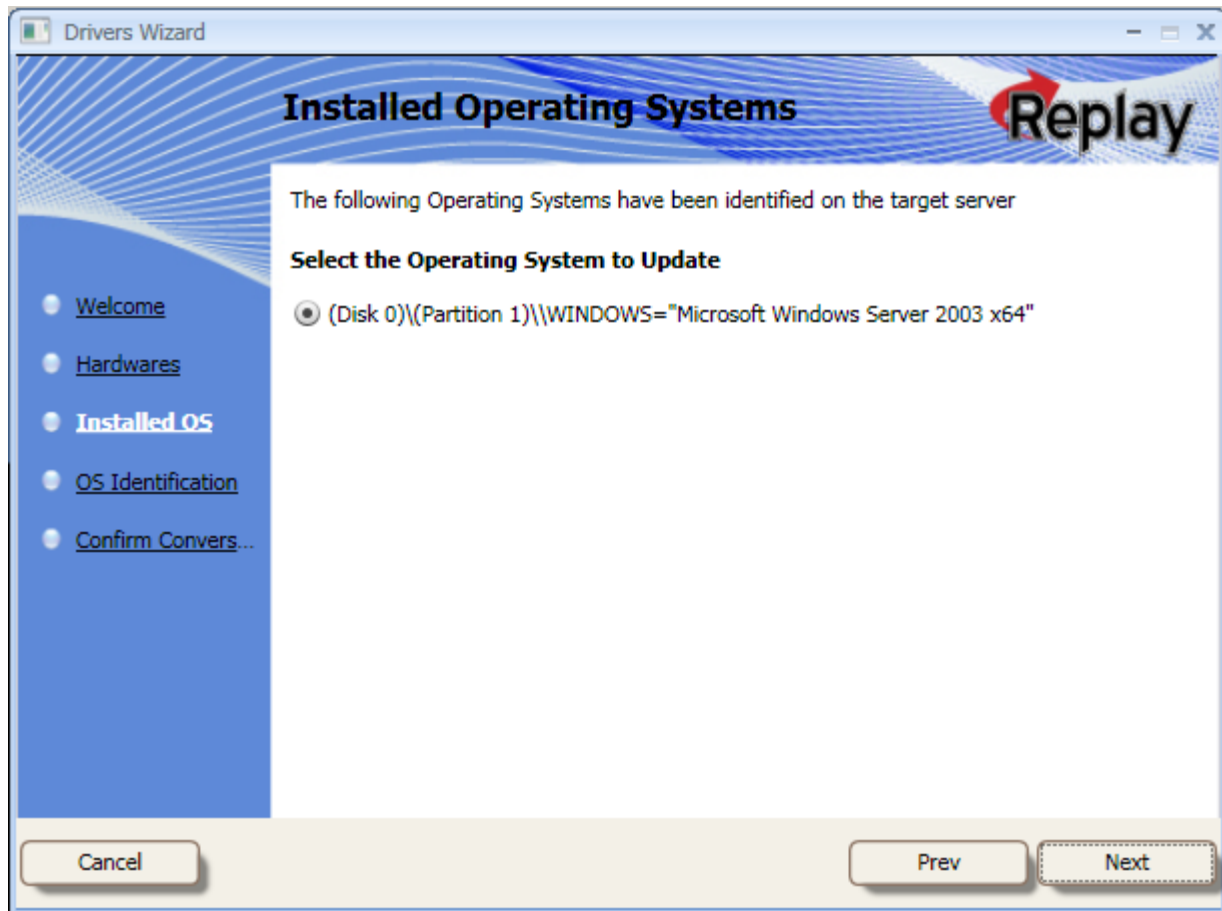
This step identifies the storage hardware currently configured on the machine where the wizard is being run. This step also shows the disk partition information.



Step three - "Installed Operating Systems"

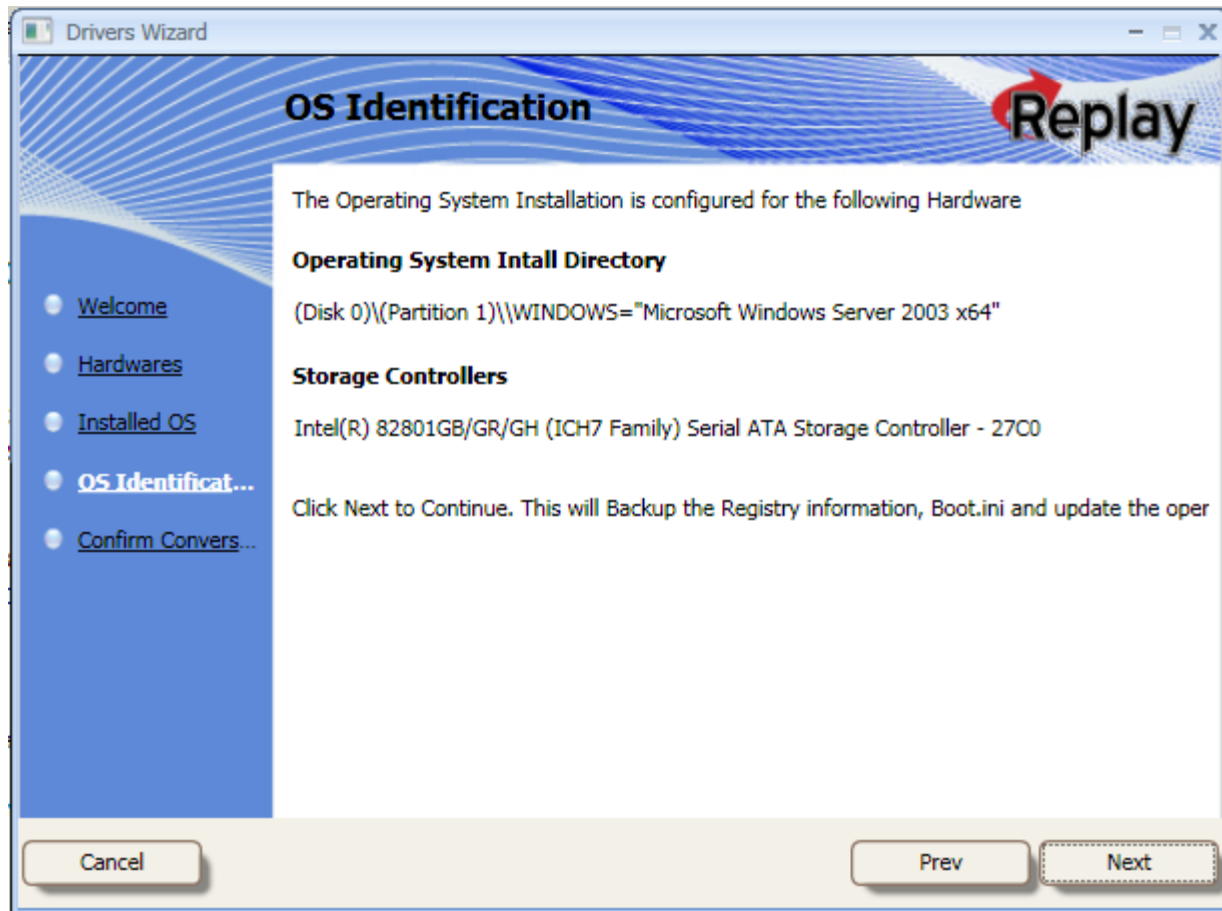
This step inventories Operating System installations on all local hard drives. It allows user to choose which OS found on the local disk(s) will be used for driver injection.

Drivers for the hardware identified in the wizard's 2nd step (Hardware Identification) will be installed (injected) into the offline installation of the OS selected in this step.



Step four - "OS Identification"

This step identifies the system directory of the OS selected in step 3 and the storage controller currently configured for this offline OS installation. This step DOES NOT show the storage controller driver identified in step 2, with which the configured one will be replaced.

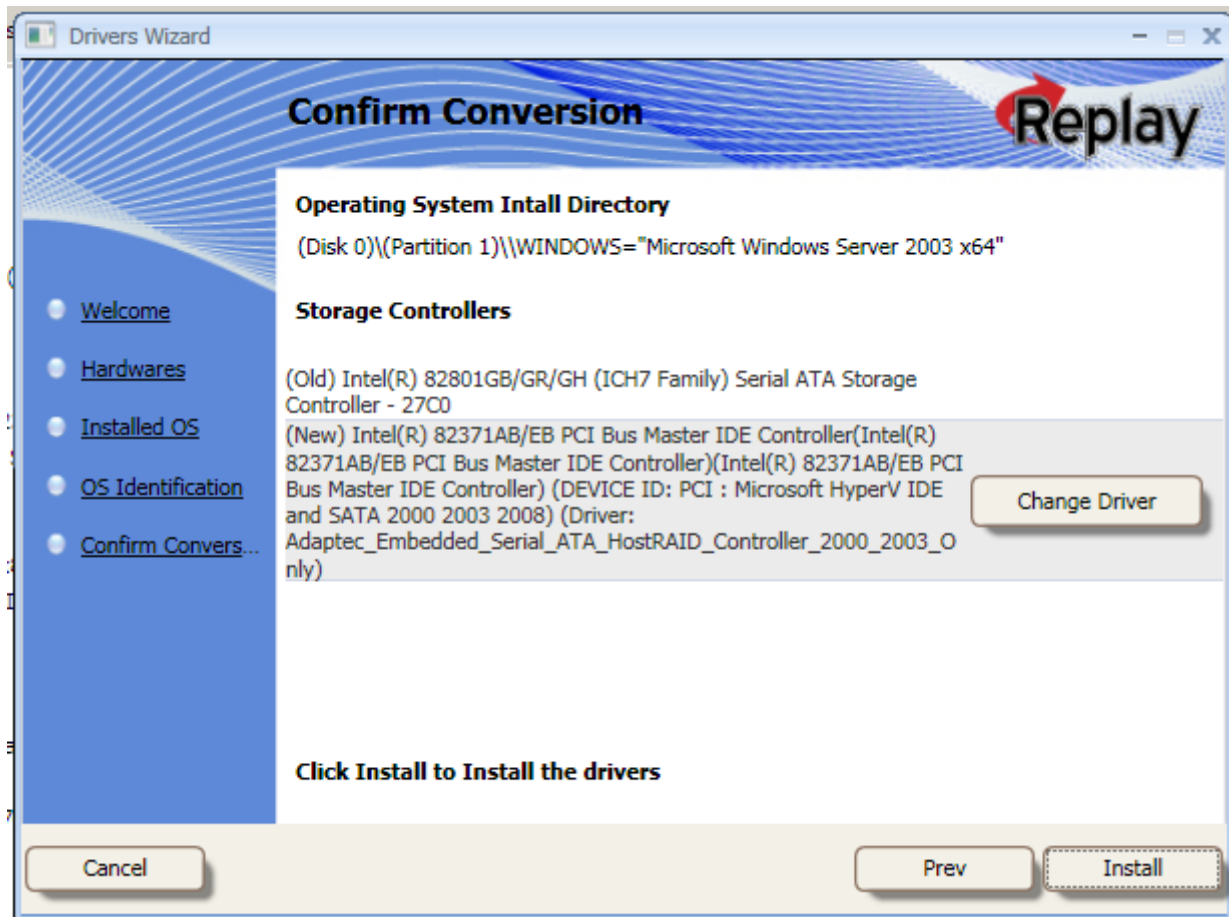


Step five - "Confirm conversion"

This last step shows the summary of the operation about to be performed. User is presented with the path to the system directory of the OS installation on one of the local disks. This is the offline OS installation whose storage controller driver is about to be modified.

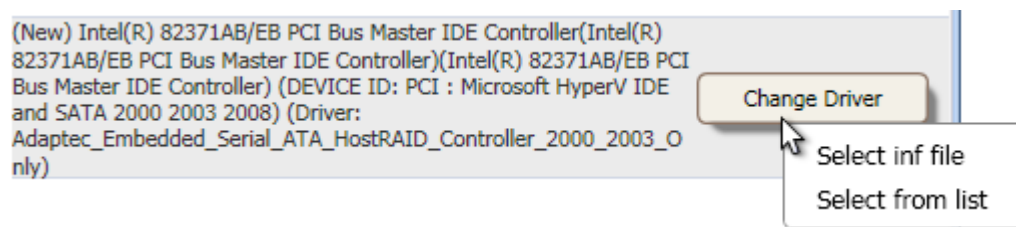
Second piece of information is the storage controller currently configured for the offline OS.

The third piece of information is the storage controller which will be installed instead of the currently configured one.



This step also allows for changing the driver which RRA automatically selected for you to something else.

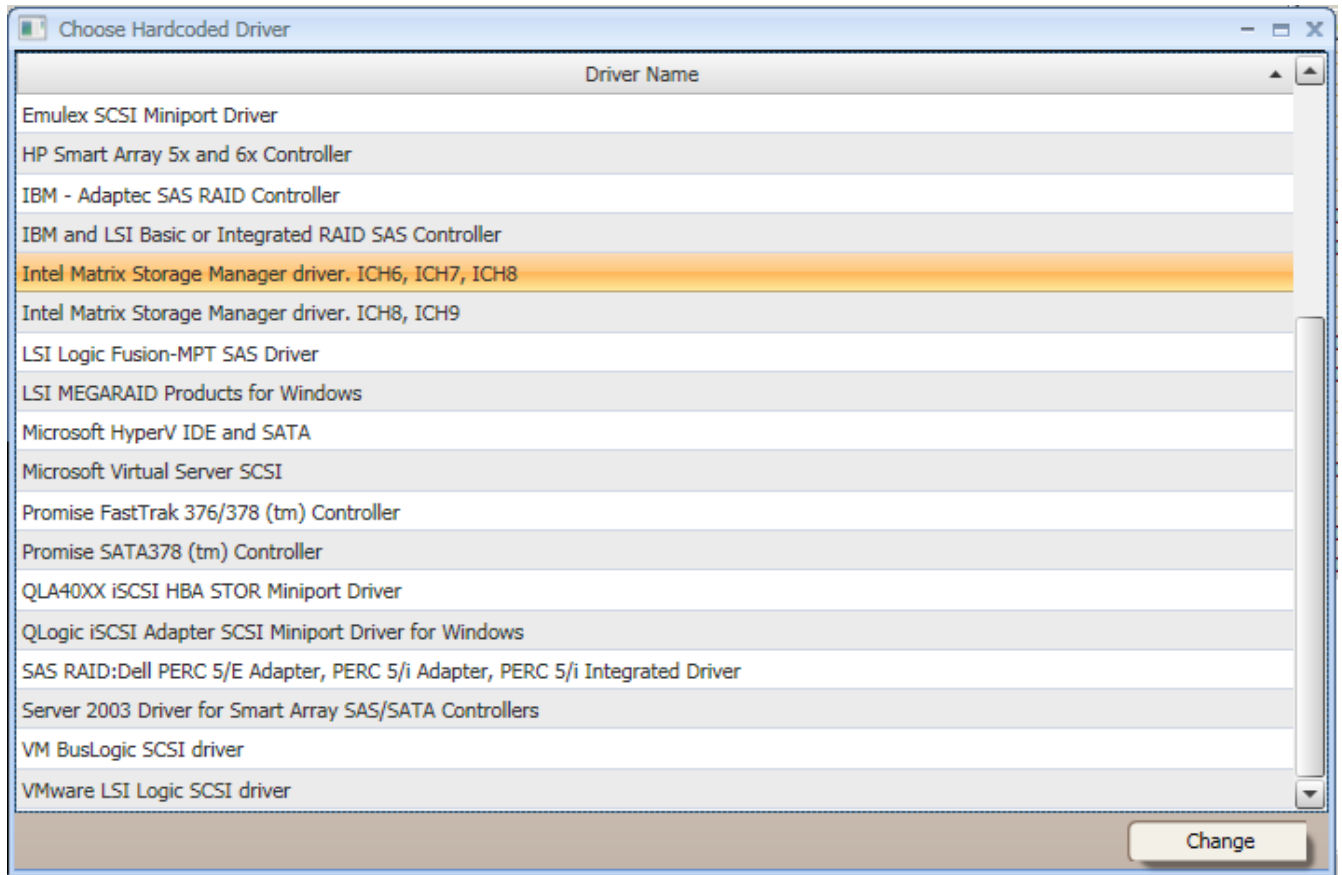
To change the driver click on the "Change Driver" button and select one of the items from the dialog that comes up



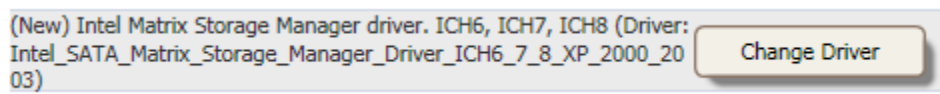
Install a driver from the supplied drivers list

RRA pre-packages some of the most common drivers in a separate download, available on the website. Once you point RRA to the location of the driver storage, it will list the drivers available in that

storage.



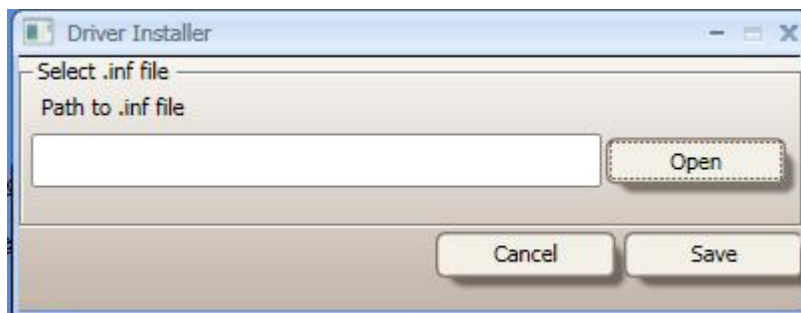
Press "Change" to override the RRA's automatic selection with the driver of your choice.

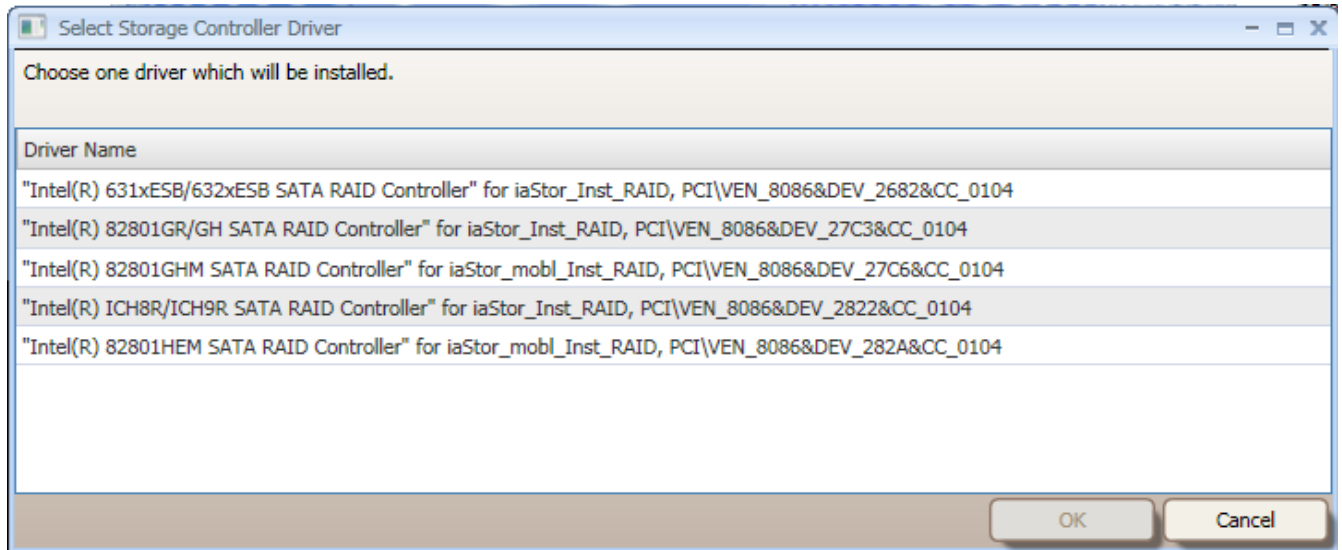


Installing a driver using the inf files

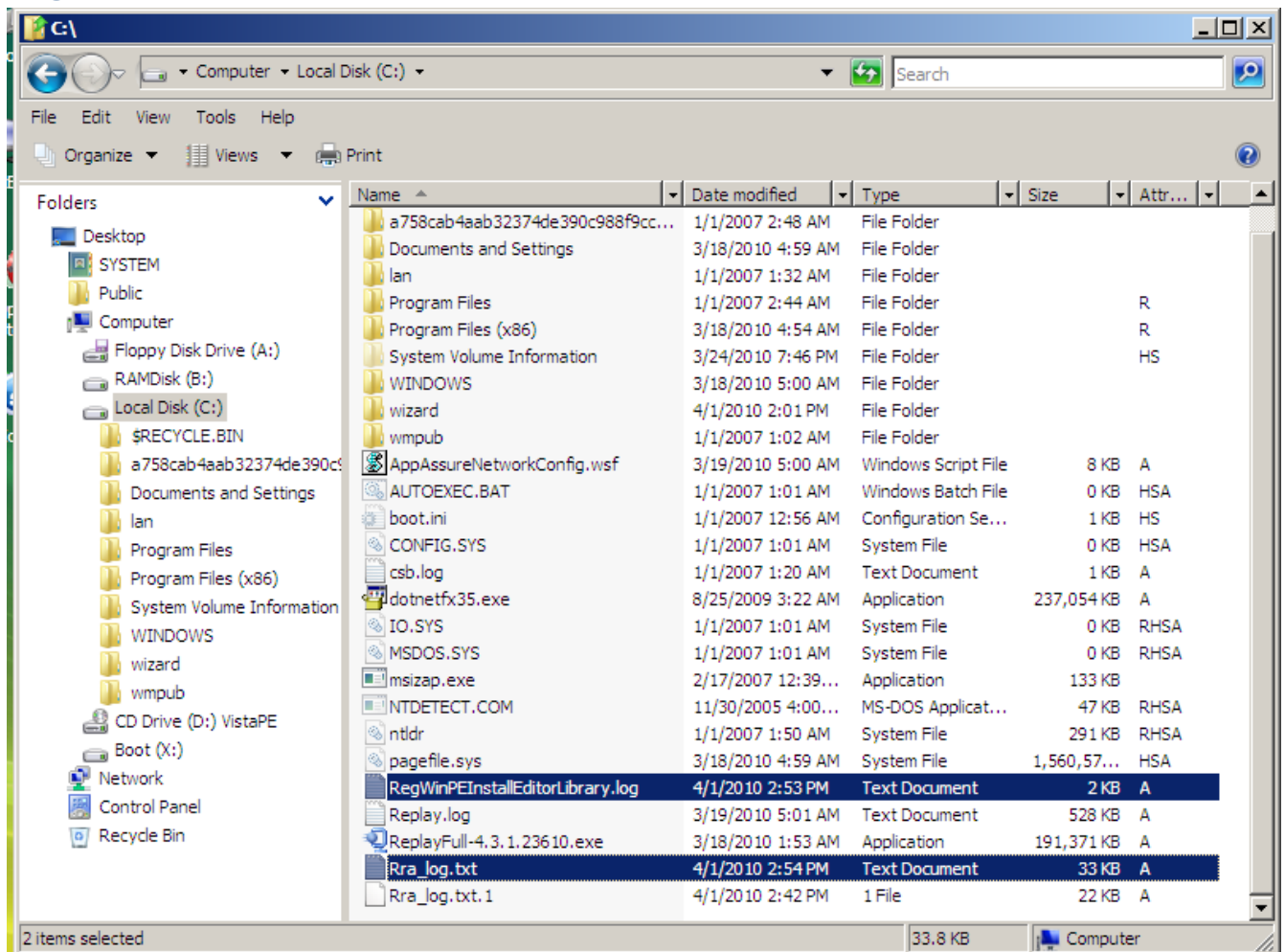
In RRA you have the ability to install drivers that are not on the supplied drivers list. This is done by downloading the driver, unpacking it to a directory and making this directory available to RRA. RRA will look in the selected directory for the driver's .inf file(driver description file) If the .inf file is valid and can be parsed, the controller drivers described in the .inf file will be shown to the user. User than can

select the desired driver.





Log files



For diagnostic purposes, the wizard creates log files that can aid developers in troubleshooting the issues

There are 2 log files that should be attached to all the issues created for RRA "rra_log.txt" that contains the output of the managed code and "RegWinPeInstallEditorLibrary.log" that contains the output of the unmanaged code.

The files will be created at the root directory of the drive the RRA wizard is run from.